



For Lease | 8670 Fruitridge Road | Sacramento, CA
±64,068 SF Class A Distribution Space

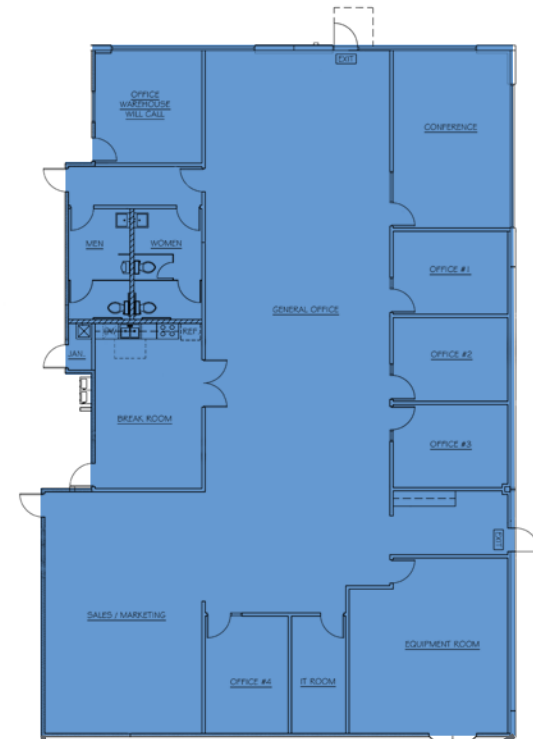
Tommy Ponder, SIOR
Executive Vice President
+1 916 563 3005
tommy.ponder@colliers.com
CA Lic. 01431506

George Vrame, SIOR
Vice President
+1 916 563 3041
george.vrame@colliers.com
CA Lic. 02028936

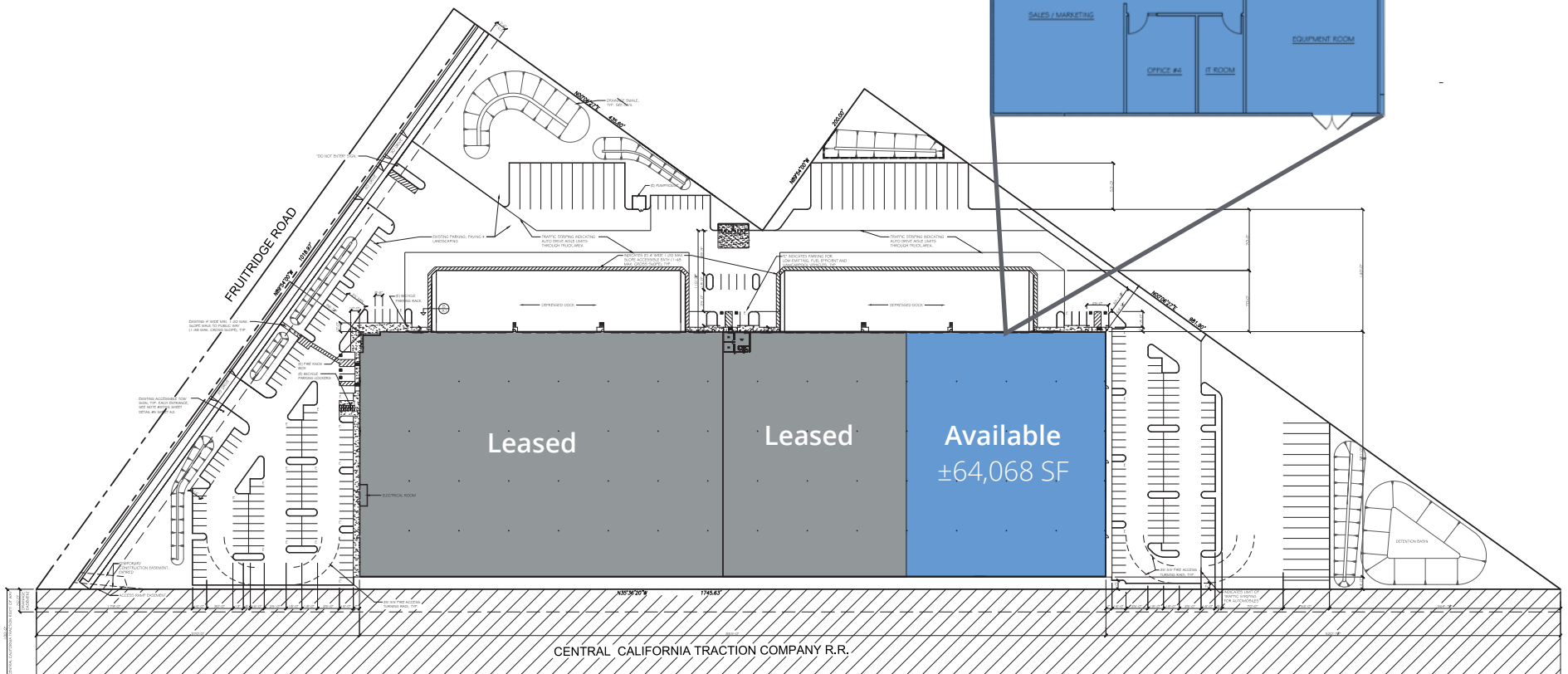


Property Overview

Building SF	±240,225	Column Spacing	57' x 57'
Available SF	±64,068	Zoning	M-2 Heavy Industrial
Office SF	±5,043	Electrical	600 amps 277/480v
Grade Doors	1 - 12' x 14'	Sprinkler Density	ESFR
Dock Doors	9 - 9' x 10'	Year Constructed	2017
Clear Height	30' - 32'	Trailer Stalls	16



Office
±5,043 SF



Location Overview



Tommy Ponder, SIOR
Executive Vice President
+1 916 563 3005
tommy.ponder@colliers.com
CA Lic. 01431506

George Vrame, SIOR
Vice President
+1 916 563 3041
george.vrame@colliers.com
CA Lic. 02028936

This document has been prepared by Colliers International for advertising and general information only. Colliers International makes no guarantees, representations or warranties of any kind, expressed or implied, regarding the information including, but not limited to, warranties of content, accuracy and reliability. Any interested party should undertake their own inquiries as to the accuracy of the information. Colliers International excludes unequivocally all inferred or implied terms, conditions and warranties arising out of this document and excludes all liability for loss and damages arising there from. This publication is the copyrighted property of Colliers International and/or its licensor(s). Real estate officer license corporation identification number 01908588. ©2024. All rights reserved.

