

5091 Kelton Way

SACRAMENTO, CA

±68,229 SF Industrial Building with ESFR Sprinklers and Dock and Grade Level Loading



Contact Us

Zac Sweet SIOR

Senior Vice President
+1 916 717 4768
zac.sweet@cbre.com
Lic. 01352800

Jeff Kvarme

First Vice President
+1 916 203 5257
jeff.kvarme@cbre.com
Lic. 01924968

Tyler Howell

Senior Associate
+1 916 781 4835
tyler.howell1@cbre.com
Lic. 02100245

Courtney Lee

Associate
+1 916 906 5544
courtney.lee@cbre.com
Lic. 02031694

Jason Law

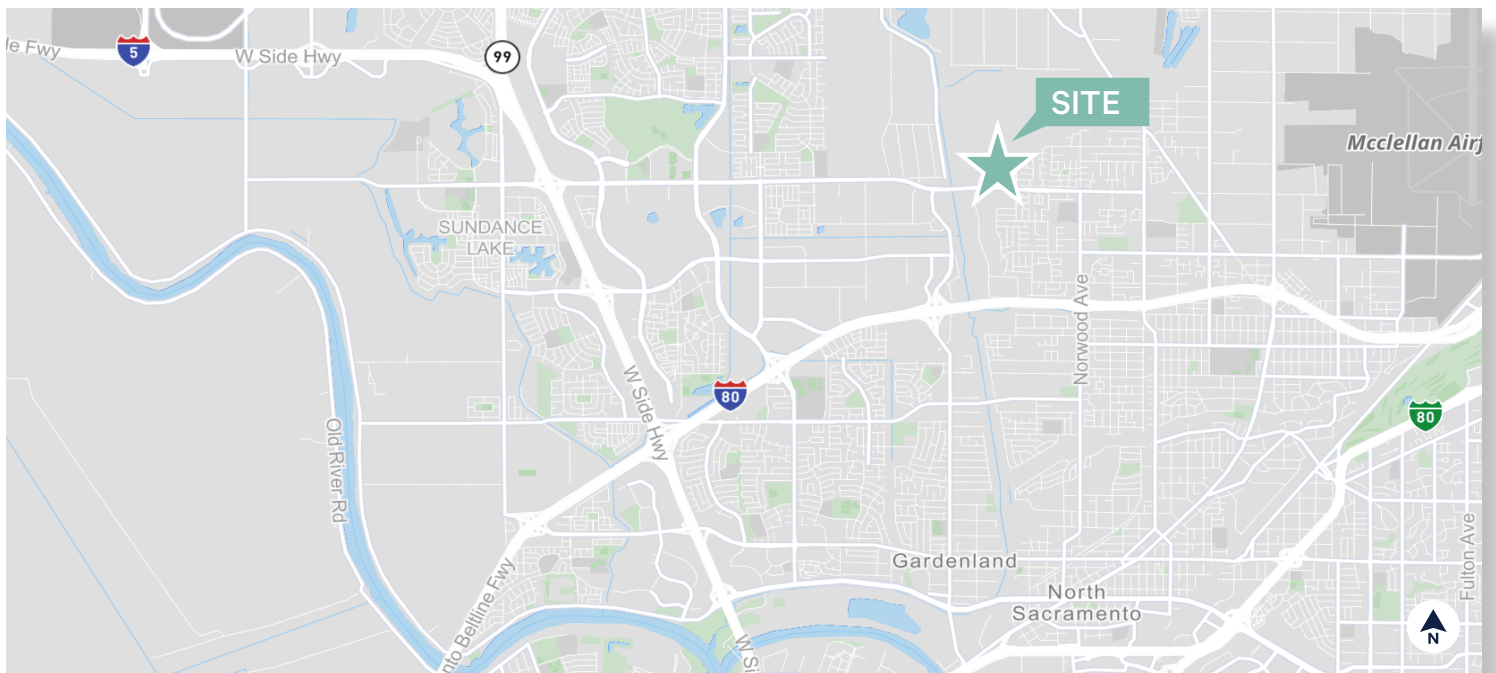
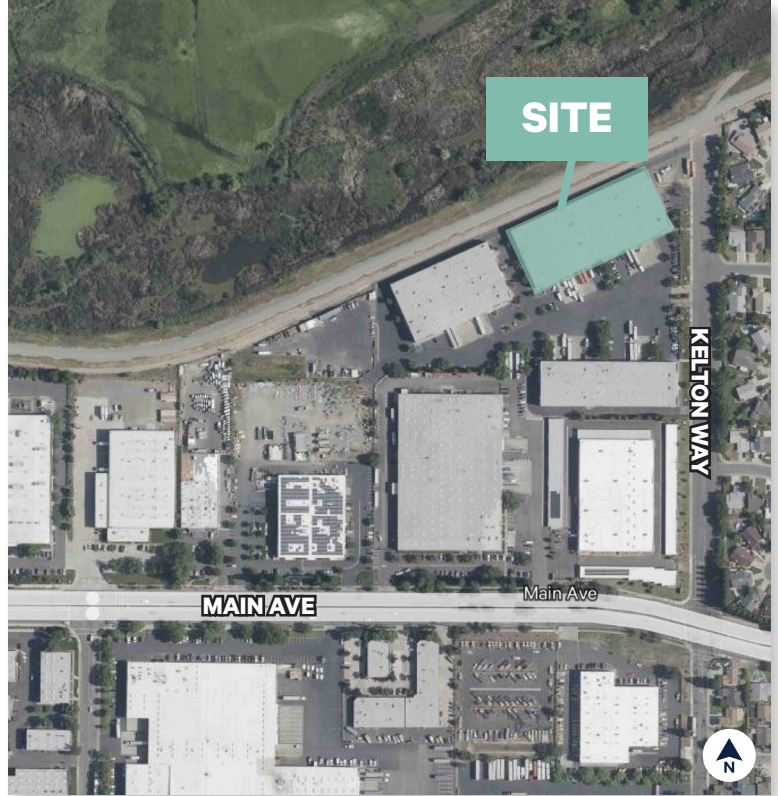
Asset Manager, Buzz Oates
+ 916 379 3860
jasonlaw@buzzoates.com
Lic. 02129884

PROPERTY INFORMATION

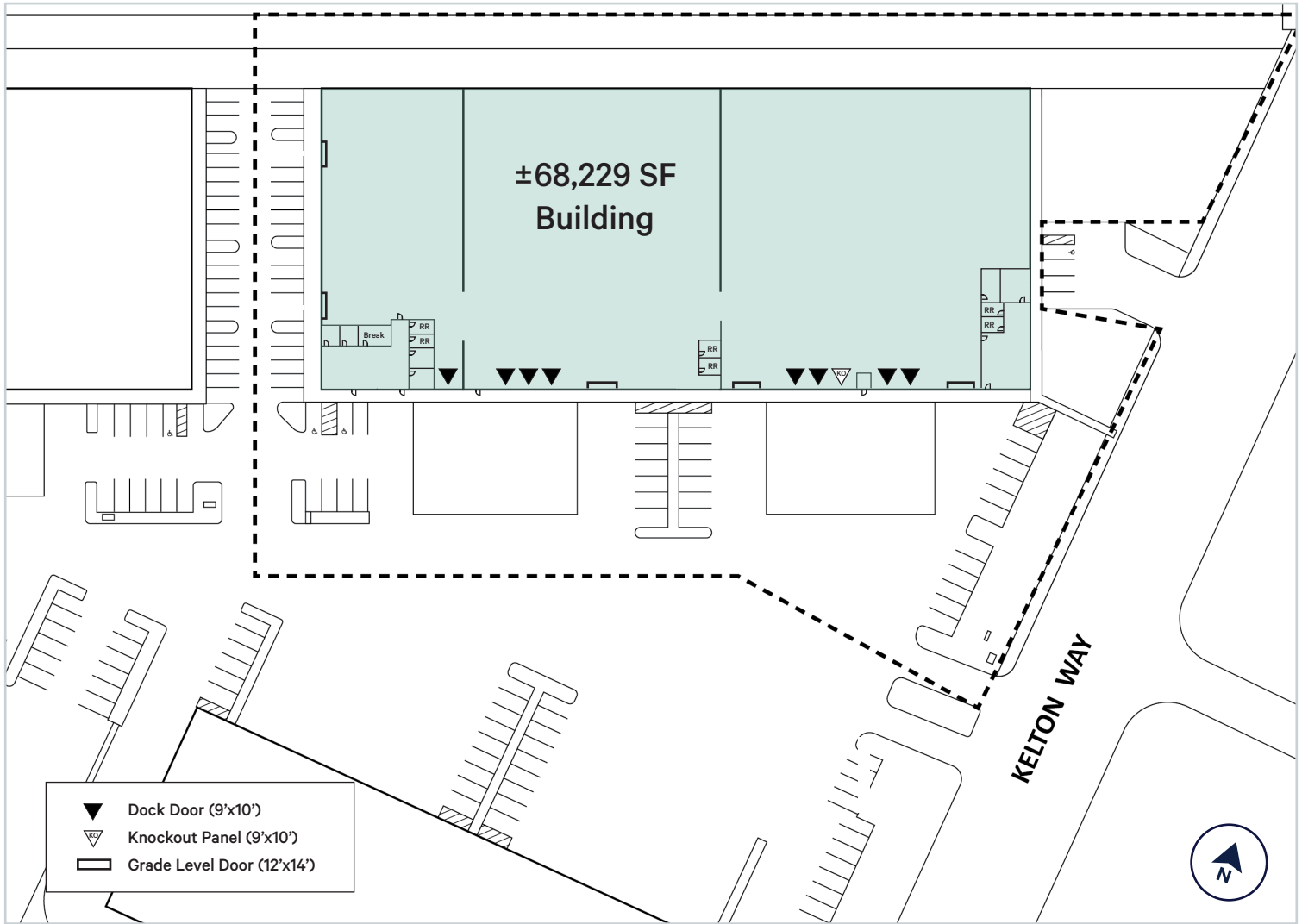
**5091 KELTON WAY
SACRAMENTO, CA 95838**

- + Building Area: ±68,229 SF*
- + Office Area: ±5,100 SF*
- + Clear Height: 28'-31'
- + 8 (9'x10') Dock Doors
- + 5 (12'X14') Grade Level Doors
- + Sprinklers: ESFR
- + Zoning: M-1 Light Industrial*
- + Power: 1,600 amps, 277/480V*
- + Available: November 2025

*TENANT TO INDEPENDENTLY VERIFY PRIOR TO ENTERING BINDING AGREEMENT



SITE PLAN



Contact Us

Zac Sweet SIOR

Senior Vice President
+1 916 717 4768
zac.sweet@cbre.com
Lic. 01352800

Jeff Kvarme

First Vice President
+1 916 203 5257
jeff.kvarme@cbre.com
Lic. 01924968

Tyler Howell

Senior Associate
+1 916 781 4835
tyler.howell1@cbre.com
Lic. 02100245

Courtney Lee

Associate
+1 916 906 5544
courtney.lee@cbre.com
Lic. 02031694

Jason Law

Asset Manager, Buzz Oates
+ 916 379 3860
jasonlaw@buzzoates.com
Lic. 02129884