

COMING SOON



Building A - Rendering

SUISUN LOGISTICS CENTER

145,397 SF - 644,782 SF FOR LEASE

5 Proposed Buildings | Suisun City, CA



SUISUN LOGISTICS CENTER | SUISUN CITY, CA

PROPERTY SPECS & SITE PLAN

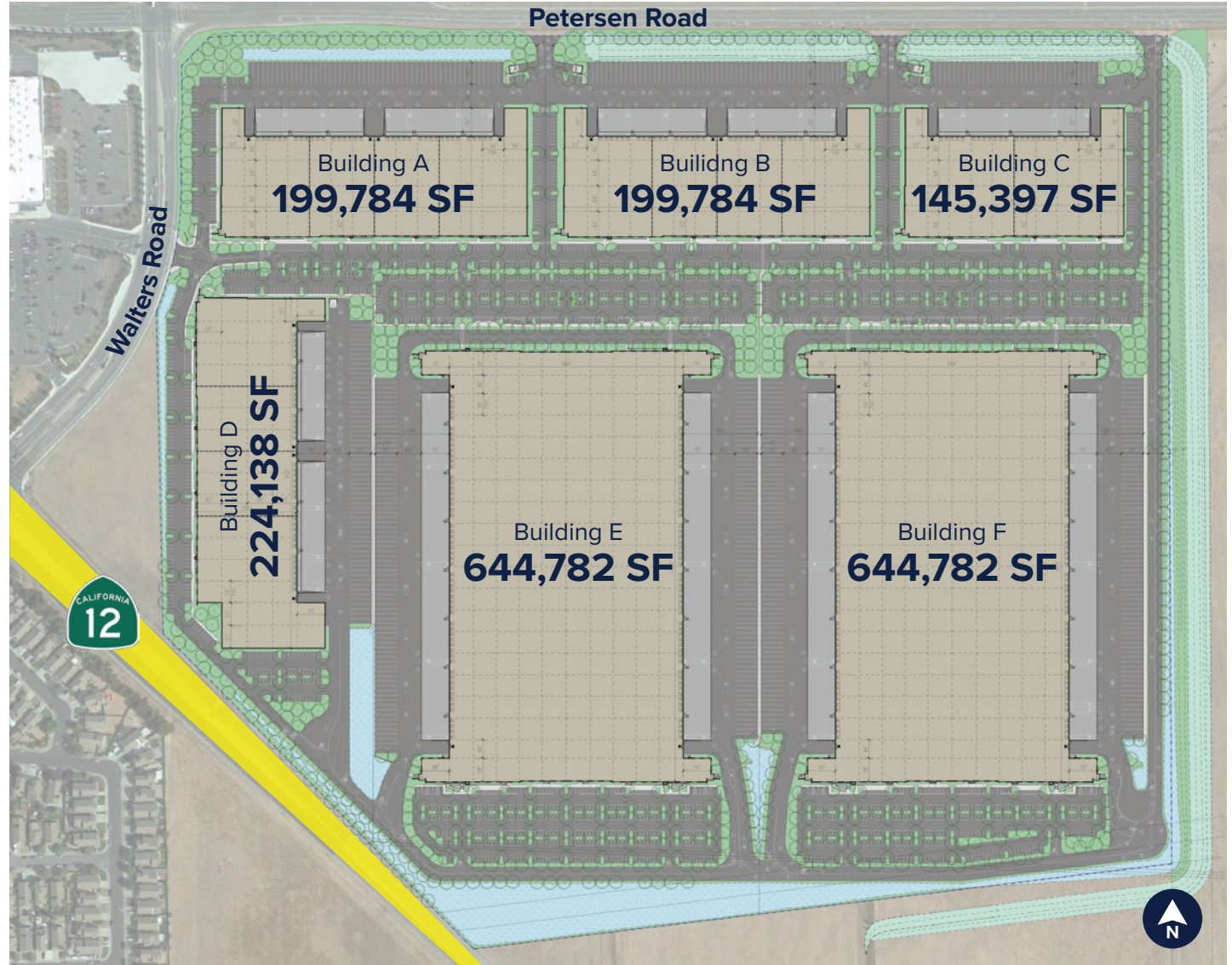


Building A & B: 199,784 SF
Clear Height: 36'
Dock Doors: 36 | **Grade Level Doors:** 4
Site Area A: 12.05 acres, **B:** 11.43 acres
Coverage A: 38.06%, **B:** 40.13%
Auto Parking A: 215, **B:** 206
Trailer Parking A: 53, **B:** 54

Building C: 145,397 SF
Clear Height: 36'
Dock Doors: 25 | **Grade Level Doors:** 2
Site Area: 9.32 acres
Coverage: 35.82%
Auto Parking: 175 | **Trailer Parking:** 35

Building D: 224,138 SF
Clear Height: 36'
Dock Doors: 40 | **Grade Level Doors:** 4
Site Area: 14.37 acres
Coverage: 35.81%
Auto Parking: 285 | **Trailer Parking:** 63

Building E & F: 644,782 SF
Clear Height: 42'
Dock Doors: 114 | **Grade Level Doors:** 4
Site Area E: 36.12 acres, **F:** 36.46 acres
Coverage E: 40.98%, **F:** 40.59%
Auto Parking E: 681, **F:** 645
Trailer Parking E: 144, **F:** 140



SUISUN LOGISTICS CENTER | SUISUN CITY, CA

RENDERINGS



Building B



Building C



Building D



Building E



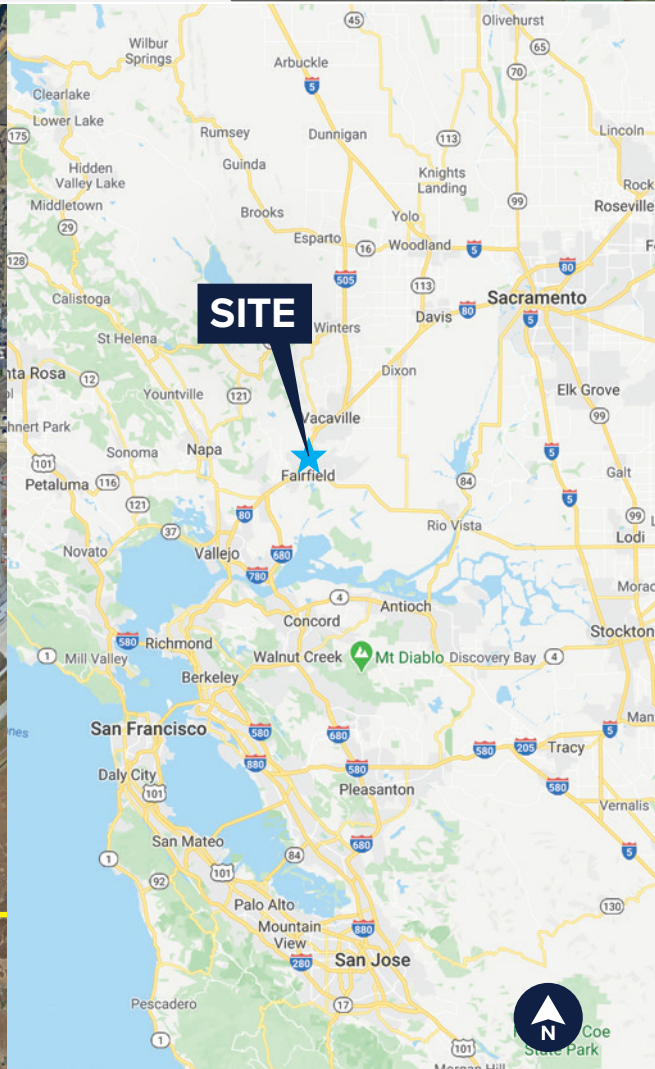
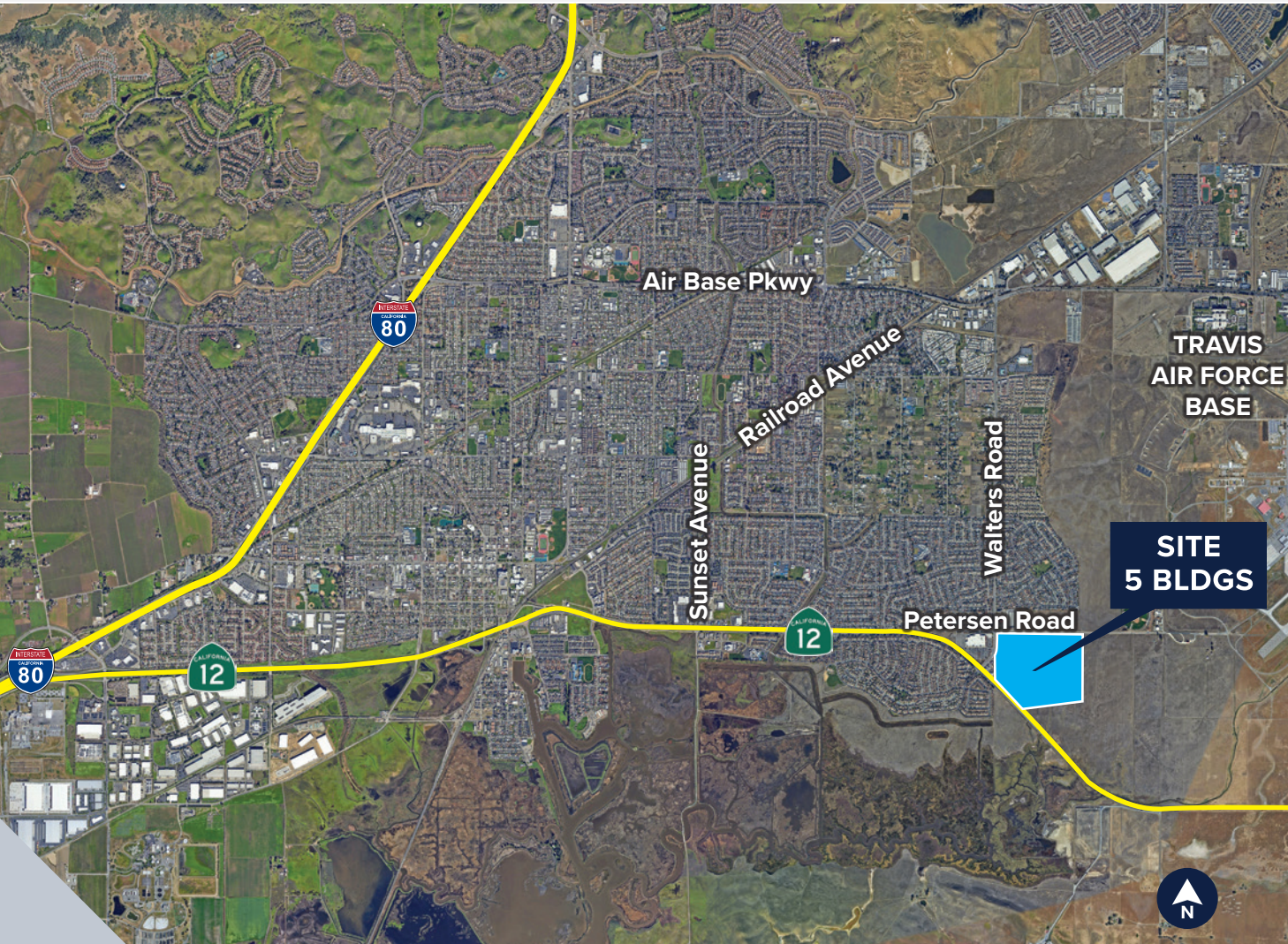
Building F



CONTACT DREW BOCOOK 916.379.3856 | drewbocook@buzzoates.com

SUISUN LOGISTICS CENTER | SUISUN CITY, CA

AERIAL & REGIONAL MAP



CONTACT DREW BOCOOK 916.379.3856

drewbocook@buzzoates.com | CaIBRE: 01836301
555 Capitol Mall, Suite 900 | Sacramento, CA 95814
www.buzzoates.com



The information contained herein is gathered from sources believed to be reliable. We cannot, however, guarantee its accuracy. All information should be verified prior to sale or lease.